

oakheart



£350,000

Offers In Excess Of  
Victoria Road, Chelmsford



Nestled on the desirable Victoria Road, this beautifully presented two-bedroom ground floor apartment offers a perfect blend of modern living and convenience. Upon entering, you are welcomed into a larger than average entrance hall giving access to a spacious open plan living area that seamlessly integrates with a well-appointed kitchen, complete with integrated appliances, making it ideal for both entertaining and everyday living.

The apartment features two generously sized bedrooms, with the master bedroom benefiting from an en-suite bathroom, providing a private sanctuary for relaxation. The second bathroom is equally well-finished, ensuring comfort for both residents and guests alike.

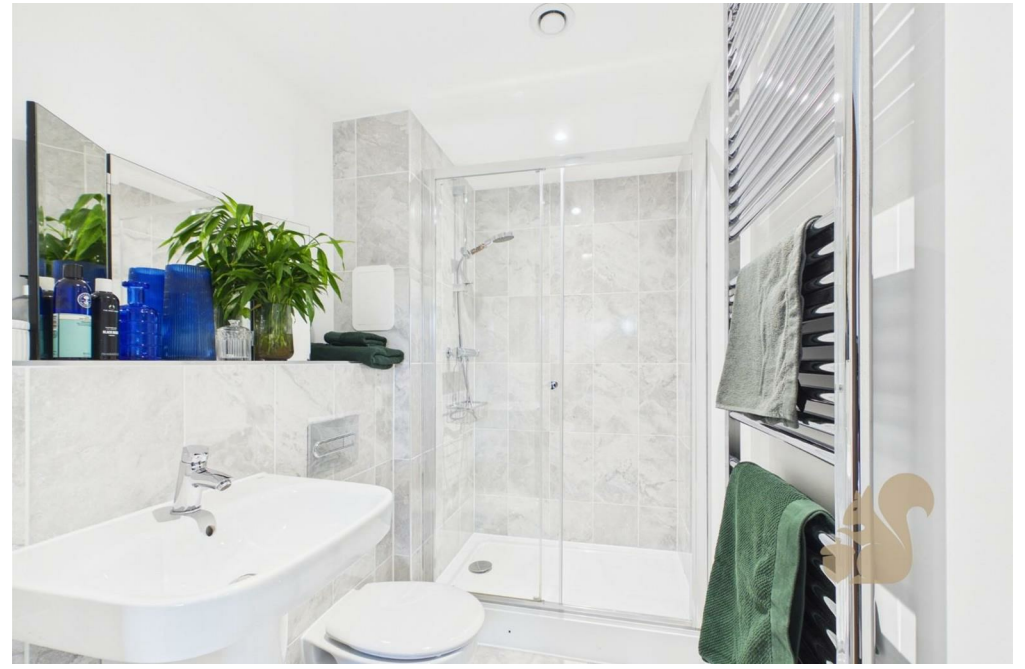
One of the standout features of this property is the provision of two designated secure parking spaces, a rare find in such a central location. This flat is conveniently situated, providing easy

access to Chelmsford's mainline station and the vibrant city centre, making it an excellent choice for commuters and those who enjoy the amenities of urban living.

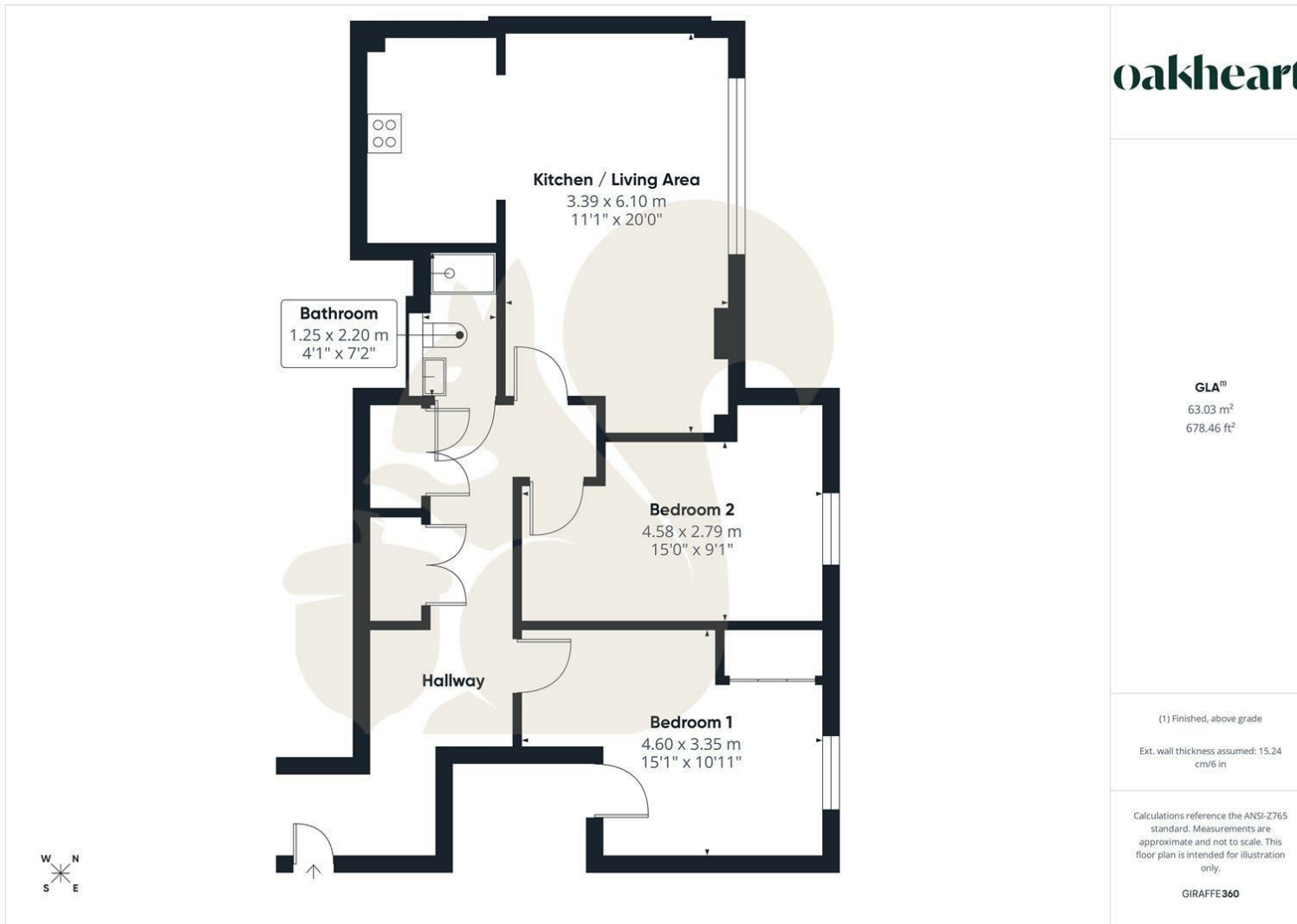
This property is not just a home; it is a lifestyle choice, offering both comfort and accessibility in a sought-after area. Whether you are a first-time buyer, a young professional, or looking to downsize, this apartment is sure to meet your needs and exceed your expectations.












Local Authority:  
chelmsford

Tenure:  
Leasehold

Council Tax Band:  
D

Energy Efficiency Rating		Current	Potential
<i>Very energy efficient - lower running costs</i>			
(92 plus) <b>A</b>			
(81-91) <b>B</b>		<b>82</b>	<b>82</b>
(69-80) <b>C</b>			
(55-68) <b>D</b>			
(39-54) <b>E</b>			
(21-38) <b>F</b>			
(1-20) <b>G</b>			
<i>Not energy efficient - higher running costs</i>			
<b>England &amp; Wales</b>		EU Directive 2002/91/EC 	

Agents Note: Whilst every care has been taken to prepare these particulars, they are for guidance purposes only. All measurements are approximate and are for general guidance purposes only and whilst every care has been taken to ensure their accuracy, they should not be relied upon.